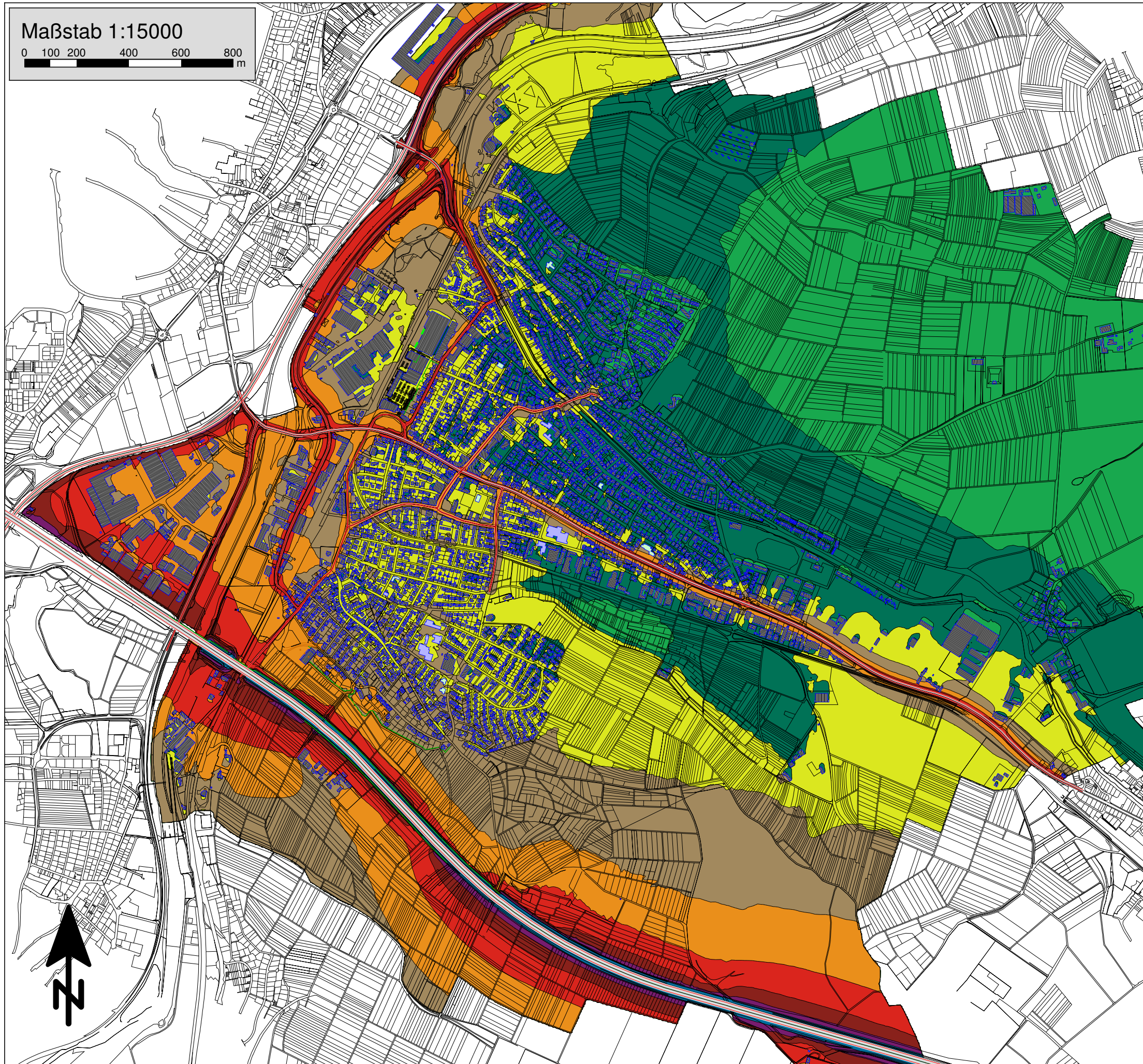


Maßstab 1:15000

0 100 200 400 600 800 m



Bericht 070-3001-1

Anlage 2.2

## Lärmaktionsplanung 2. Stufe

Stadt Wendlingen a.N.












### Rasterlärmkarte $L_{\text{night}}$ , Straße

#### Legende

#### Mittelungspegel nach VBUS

$L_{\text{night}}$   
Bezugshöhe 4 Meter über Gelände  
in dB(A)

	<= 40
	40 - 45
	45 - 50
	50 - 55
	55 - 60
	60 - 65
	65 - 70
	70 - 75
	> 75

Berechnungsgrundlage:  
Vorläufige Berechnungsmethode für den  
Umgebungsärm an Straßen VBUS (2006)

Planungsgrundlage:  
digitale Daten Stadt Wendlingen a.N.  
Stand 2014

Augsburg, den 24.07.2015  
Im Auftrag der Stadt Wendlingen a.N.

**MÖHLER+PARTNER**  
INGENIEURE AG

Eberlestraße 27  
86157 Augsburg

T +49 821 455 497 - 0  
F +49 821 455 497 - 29

info@mopa.de  
www.mopa.de